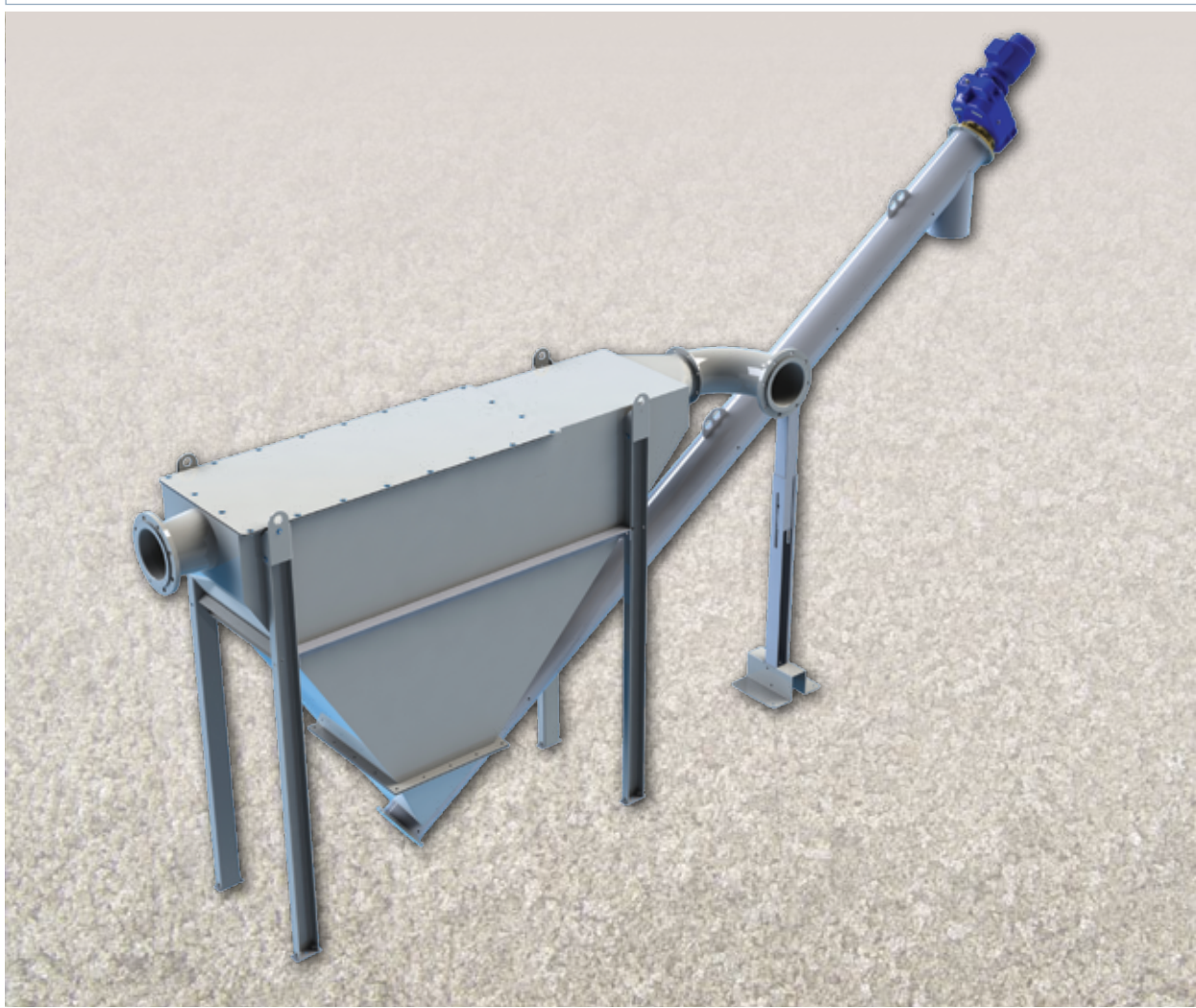


## Fluid Dynamic Grit Classifier GRITSEP® FGC



# THE MOST COMPACT AND EFFICIENT GRIT AND SAND CLASSIFIER

GRITSEP® FGC is an innovative sand and grit classifier designed with the most advanced simulation software. GRITSEP® FGC is the most compact, economical solution engineered for easy on-site assembly.

Storage, transportation costs and maintenance costs are reduced to the minimum.

GRITSEP® FGC Fluid Dynamic Grit Classifier consists of a separation tank, a grit and sand extracting screw and machine supports.

In various waste water treatment processes sand removal is vital to preserve functionality of the following mechanical machines. GRITSEP® FGC Fluid Dynamic Grit Classifier enables to:

- Separate sand/grit from the waste water stream;
- Extract and de-water residual solids.

## Technical Features

Refers to sand with particle size  $\geq 200$  micron and bulk density from 0.094 – 0.096 lb/in<sup>3</sup>.

SINT™ engineering polymer anti-wear profile improves durability of the most critical machine components, mainly if the machine is extensively used.

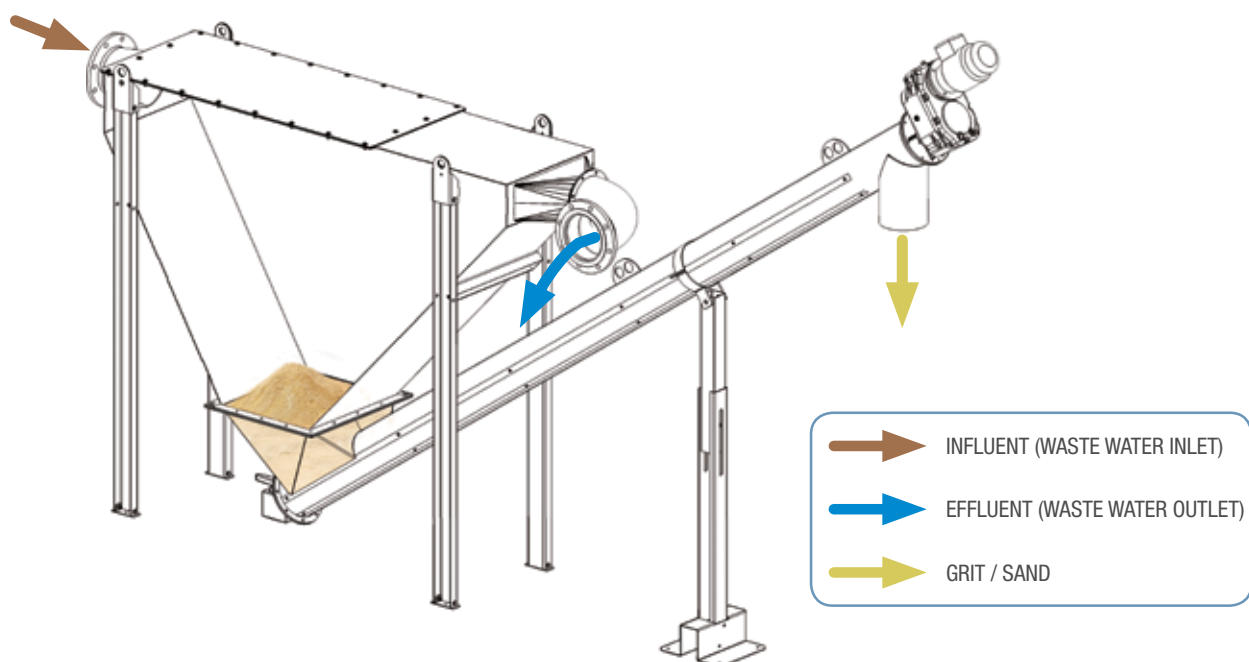
Maximum Flow Rate		Average Sand Extraction
[gal/min]	[cfs]	[cfs]
79.3	0.2	0.006
132.1	0.3	
237.8	0.5	
396.3	0.9	
572.4	1.3	



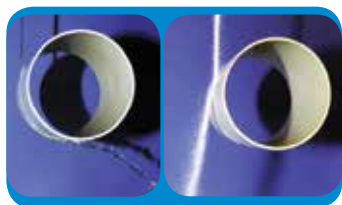
## Benefits

- ✓ Compact footprint → Reduced infrastructure costs;
- ✓ Easy, low cost installation using standard tools;
- ✓ Comprehensive product range;
- ✓ High separation performance;
- ✓ Excellent footprint-net volume ratio reduces shipping costs;
- ✓ Easy access → reduction of maintenance costs;
- ✓ Durable heavy-duty shaftless screw;
- ✓ Easy maintenance thanks to bolted wear bars;
- ✓ Durable, high-density SINT™ engineering polymer anti-wear profile (option);
- ✓ Endless tube for odor reduction (option).

## Process Description



Fluid dynamics



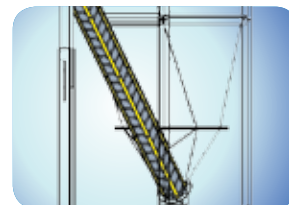
Extracting screw



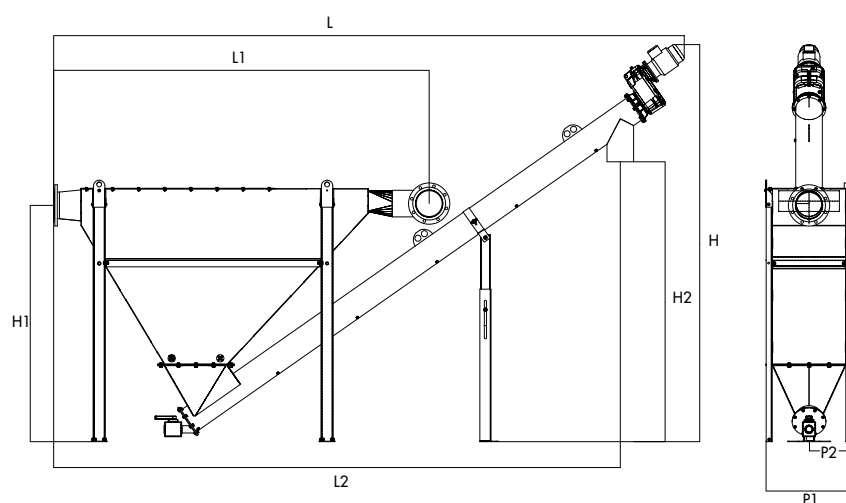
SINT™ module



Bolted wear bars  
(external view of trough)



## Overall Dimensions



MODEL	L	L1	L2	H	H1	H2	P1	P2
FGC 005	169.3	88.4	141.7	98.4	57.1	65.0	17.0	8.7
FGC 008	169.3	90.0	141.7	98.4	57.1	65.0	24.8	12.6
FGC 015	212.6	123.0	185.0	118.1	76.8	84.6	28.2	14.4
FGC 025	212.6	126.0	185.0	118.1	78.7	84.6	32.1	16.3
FGC 036	212.6	128.9	185.0	118.1	78.7	84.6	40.0	13.0

Dimensions in inch



# Application



July 2016 Rights reserved to modify technical specifications.



**WAM Inc.**  
Georgia Division  
75 Boulderbrook Circle  
Lawrenceville, GA 30045  
Tel.: (770) 339 - 6767  
Fax: (770) 339 - 4727  
wamgeorgia@waminc.com  
www.waminc.com

**WAM Inc.**  
Texas Division  
1300 Triad Blvd.  
Fort Worth, TX 76131  
Tel.: (817) 232 - 2678  
Fax: (817) 232 - 2676  
wamtexas@waminc.com  
www.waminc.com



[www.wamgroup.com](http://www.wamgroup.com)